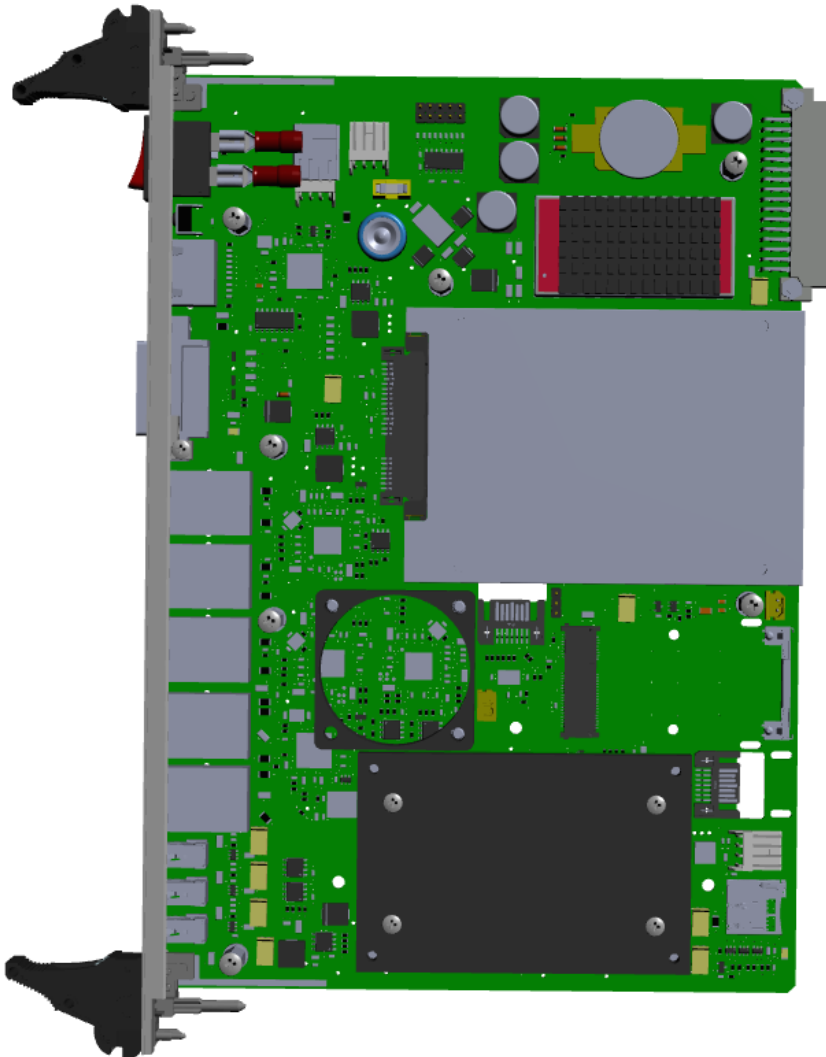




X3-PC-6U

INDUSTRIAL PC

ID 30602



The X3-PC-6U computer card has all PC functionalities and is installed in the X3 card cages. Card performance is dependent on the CPU module installed. The card may have two independent classic SATA drives or SSD. The computer can run under Windows®, Linux, QNX® operating systems. The X3-PC-6U card supports hot-swap capability. Replacement of a damaged module can take place with the power supply of the entire card cage.



BASIC PARAMETERS:

Operating temperature range:	-10°C to +70°C
	-40°C to +85°C (optionally)
Relative Humidity:	to 95%

BUS CONNECTOR INTERFACES:

Power supply:	24V DC \pm 20% / 350mA
Configuration:	mini COMe type 10, do 4GB RAM DDR3, 2x 2,5" SSD/HDD, mSATA.
CPUs used:	Intel® Celeron® N2930 QuadCore 4x1,86GHz, 2GB RAM DDR3, Intel® Atom® E3826 DualCore 2x1,46GHz, 2GB RAM DDR3, 4GB Flash, Intel® Atom® D2550 DualCore 2x1,86GHz, 2GB RAM DDR3, Intel® Atom® E3825 DualCore 2x1,33GHz, 2GB RAM DDR3

CONNECTOR INTERFACES ON THE FRONT PANEL:

Ethernet:	2 x 1 Gb/s, 3 x 10/100 Mb/s
USB:	3 x USB2.0
Video output:	1 x DVI
Serial:	1 x RS232

GALVANIC ISOLATION:

PE housing / Logic power supply 1kV DC
ETH port / Logic power supply 0.5kV DC

SOFTWARE:

Operating system:	Windows®, Windows Embedded®, Linux, QNX®
--------------------------	--

POSSIBLE MANUFACTURING OPTIONS:

Conformal coating

DIMENSIONS:

Card dimensions:	double Eurocard 6U 233x160 mm
Front panel width:	6TE (30 mm)
Weight:	ca. 270g

