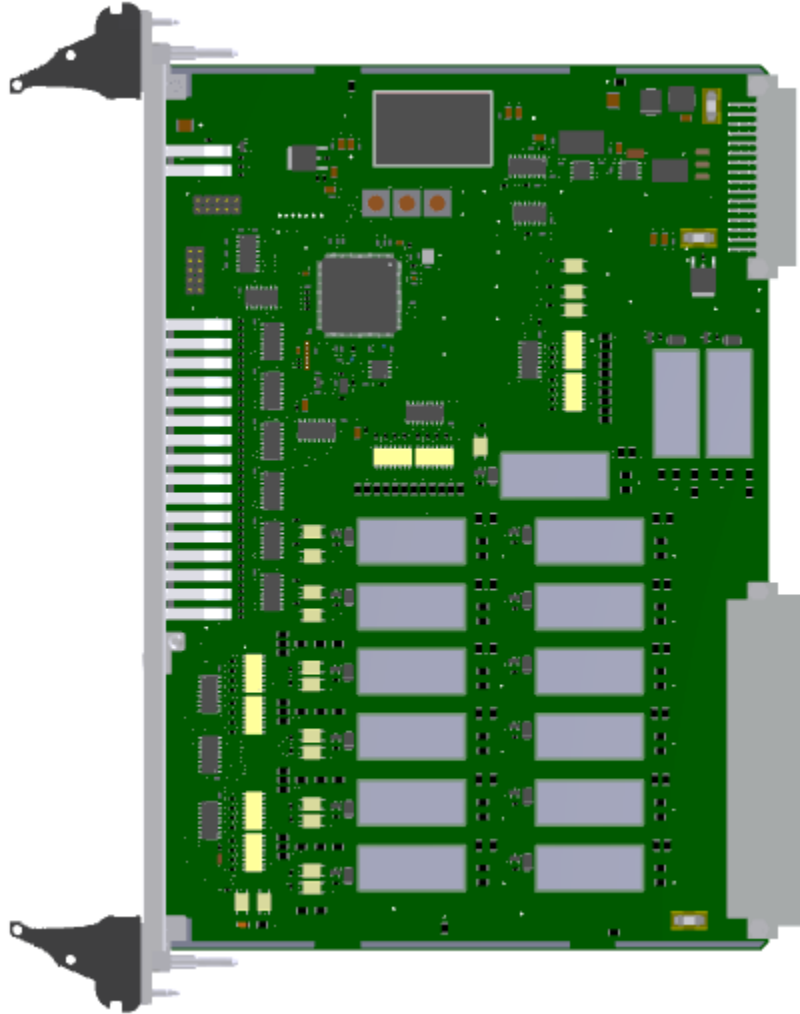




X3-OUT

RELAY OUTPUT CARD

ID 30222. 30223



The X3-OUT relay output card is designed to control the railway traffic control circuits as a relay contact. The card is made in two versions:
X3-OUT-Z – 15 x NO contact,
X3-OUT-Z – 15 x NC contact,
The both ends free contact used.



BASIC PARAMETERS:

Operating temperature range: -10°C to +70°C
 -40°C to +85°C (optionally)

Relative Humidity: to 95%

BUS CONNECTOR INTERFACES:

Power supply: 24V DC ±20% / 600mA

CAN: 1 x CAN max 1Mb/s

Outputs: 15 (relay) control outputs

OTHER INTERFACES:
CONNECTOR INTERFACES ON THE FRONT PANEL:

LEDs: Logic power supply and life indicator
 Outputs status

GALVANIC ISOLATION:

PE housing / Object 3kV DC
 PE housing / Logic power supply 3kV DC
 Object / Logic power supply 3kV DC

SOFTWARE:

Integrated

POSSIBLE MANUFACTURING OPTIONS:

Conformal coating

DIMENSIONS:

Card dimensions: Eurocard 6U 233x160 mm

Front panel width: 8TE (40 mm)

Weight: ca. 450g

