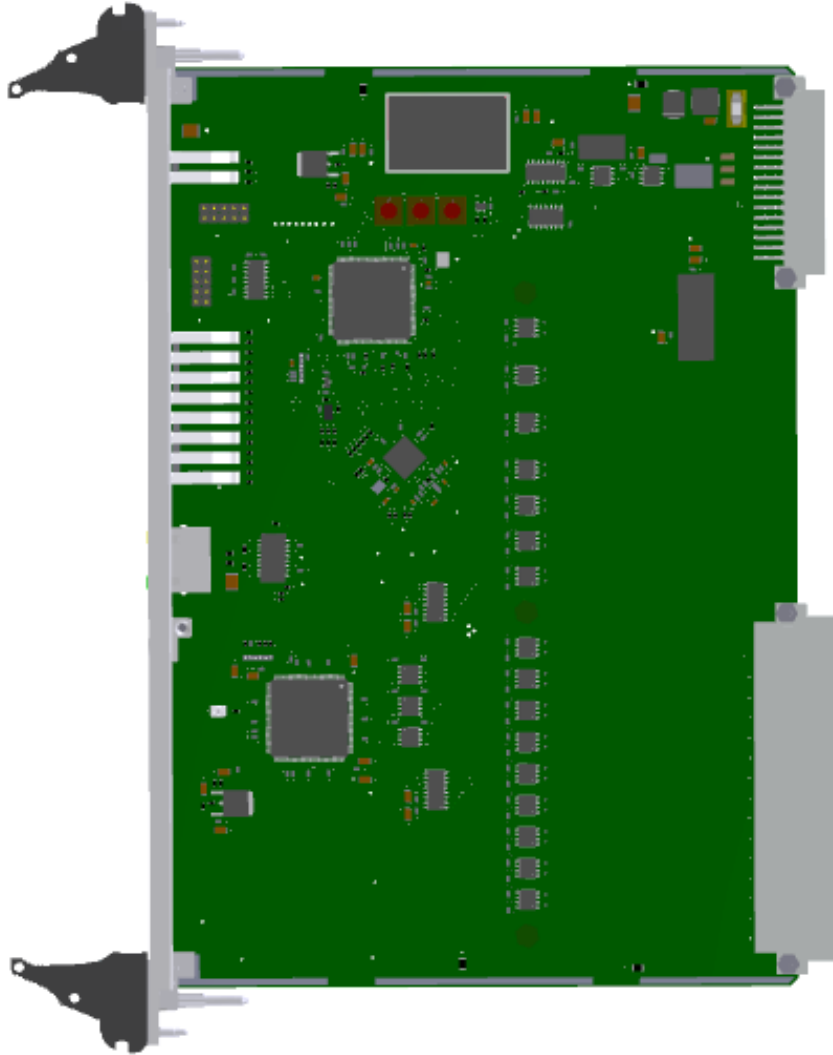




X3-OPTO

CURRENT DETECTION CARD

ID 30108.30860



The X3-OPTO card is a current detection card in the signal light circuits.



BASIC PARAMETERS:

Operating temperature range: -10°C to +70°C
-40°C to +85°C (optionally)

Relative Humidity: to 95%

BUS CONNECTOR INTERFACES:

Power supply: 24V DC ±20% / 600mA

CAN: 1 x CAN max 1Mb/s

Ethernet: Configured by the user

Inputs: 16 binary both ends free inputs
Signal light circuits from 115 to 145V AC

OTHER INTERFACES:

CONNECTOR INTERFACES ON THE FRONT PANEL:

LEDs: Logic power supply and life indicator
Inputs status

GALVANIC ISOLATION:

PE housing / Object 3kV DC
PE housing / Logic power supply 3kV DC
Object / Logic power supply 3kV DC

SOFTWARE:

Integrated

POSSIBLE MANUFACTURING OPTIONS:

Conformal coating

DIMENSIONS:

Card dimensions: Eurocard 6U 233x160 mm

Front panel width: 8TE (40 mm)

Weight: ca. 150g

