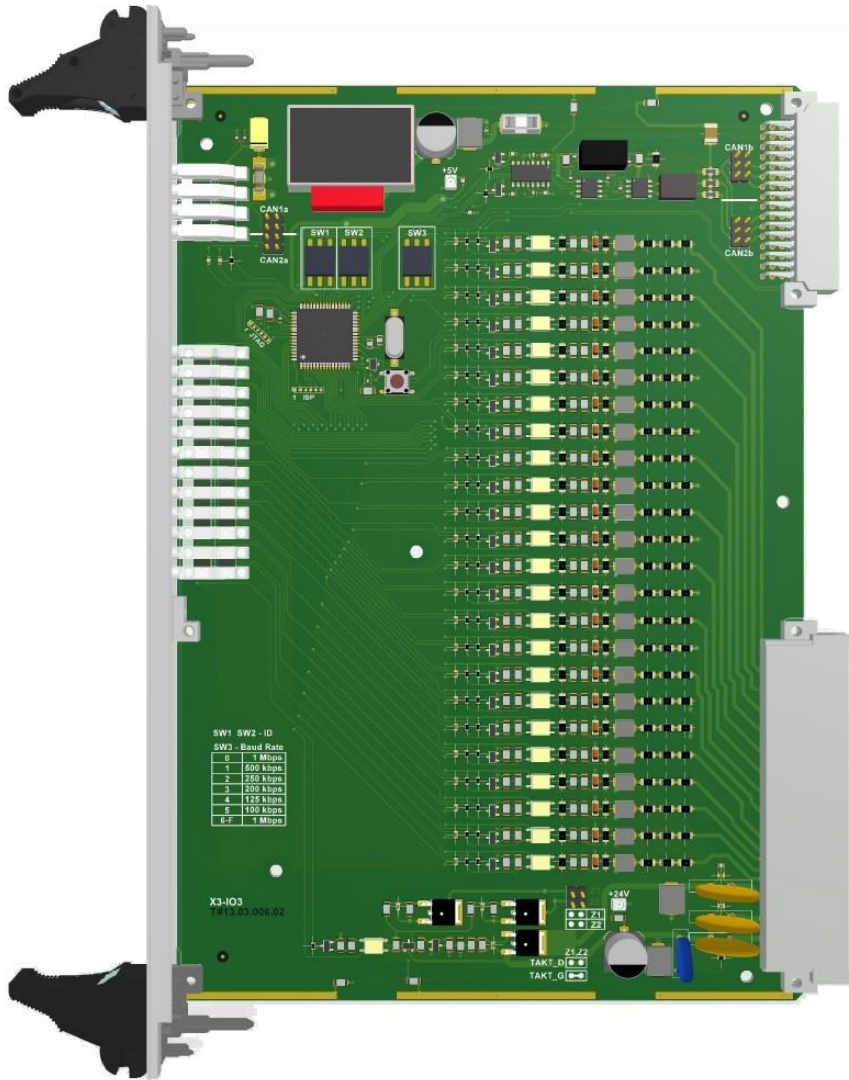




X3-IO3

UNIVERSAL INPUT CARD

ID 30101



The card is designed to collect device status, signal from relay contacts, optical isolation or other forms of signal distribution. The card supports hot-swap capability. Replacement of a damaged module can take place with the power supply of the card cage. Especially useful in harsh industrial environments.



BASIC PARAMETERS:

Operating temperature range: -10°C to +70°C
-40°C to +85°C (optionally)

Relative Humidity: to 95%

BUS CONNECTOR INTERFACES:

Power supply: 24V DC \pm 20% / 80mA

CAN: 1 x CAN max 1Mb/s

Inputs: 24 inputs 24V DC / 15m A

OTHER INTERFACES:

Switches: 3 x 16-position switch
SW1 + SW2- module address
SW3 - transmission speed

CONNECTOR INTERFACES ON THE FRONT PANEL:

LEDs: Logic power supply and life indicator
Inputs status

GALVANIC ISOLATION:

PE housing / Object 3kV DC
PE housing / Logic power supply 3kV DC
Object / Logic power supply 3kV DC

SOFTWARE:

Integrated

POSSIBLE MANUFACTURING OPTIONS:

Conformal coating

DIMENSIONS:

Card dimensions: double Eurocard 6U 233x160 mm

Front panel width: 6TE (30 mm)

Weight: ca. 300g

