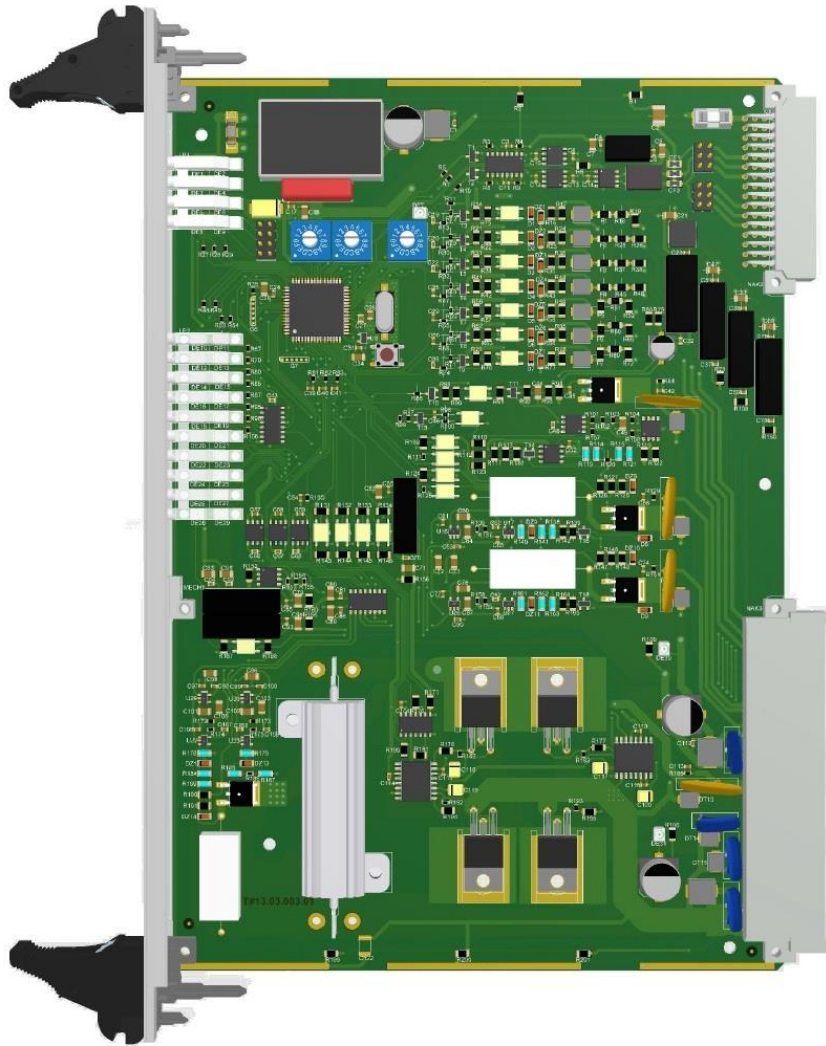




X3-IO1

BARRIER DRIVE CARD

ID 30401



The card is designed to control and monitor the status of a 24V DC barrier drive. The card processes signals from and to the processor via two channels. The card supports hot-swap capability. Replacement of a damaged module can take place with the power supply of the entire card cage.



BASIC PARAMETERS:

Operating temperature range: -10°C to +70°C
-40°C to +85°C (optionally)

Relative Humidity: to 95%

BUS CONNECTOR INTERFACES:

Power supply: 24V DC ±20% / 150mA

CAN: 1 x CAN max 1Mb/s

Outputs / Inputs: 1 digital power output with PWM 10A / 24V
3 digital outputs 1A / 24V
7 digital inputs 10mA / 24V

OTHER INTERFACES: interfaces

Switches: 3 x 16-position switch
SW1 + SW2 – module address
SW3 – transmission speed

CONNECTOR INTERFACES ON THE FRONT PANEL:

LEDs: Logic power supply and life indicator
Outputs and inputs status

GALVANIC ISOLATION:

PE housing / Object 3kV DC
PE housing / Logic power supply 3kV DC
Object / Logic power supply 3kV DC

SOFTWARE:

Integrated

POSSIBLE MANUFACTURING OPTIONS:

Conformal coating

DIMENSIONS:

Card dimensions: double Eurocard 6U 233x160 mm

Front panel width: 6TE (30 mm)

Weight: ca. 150g

