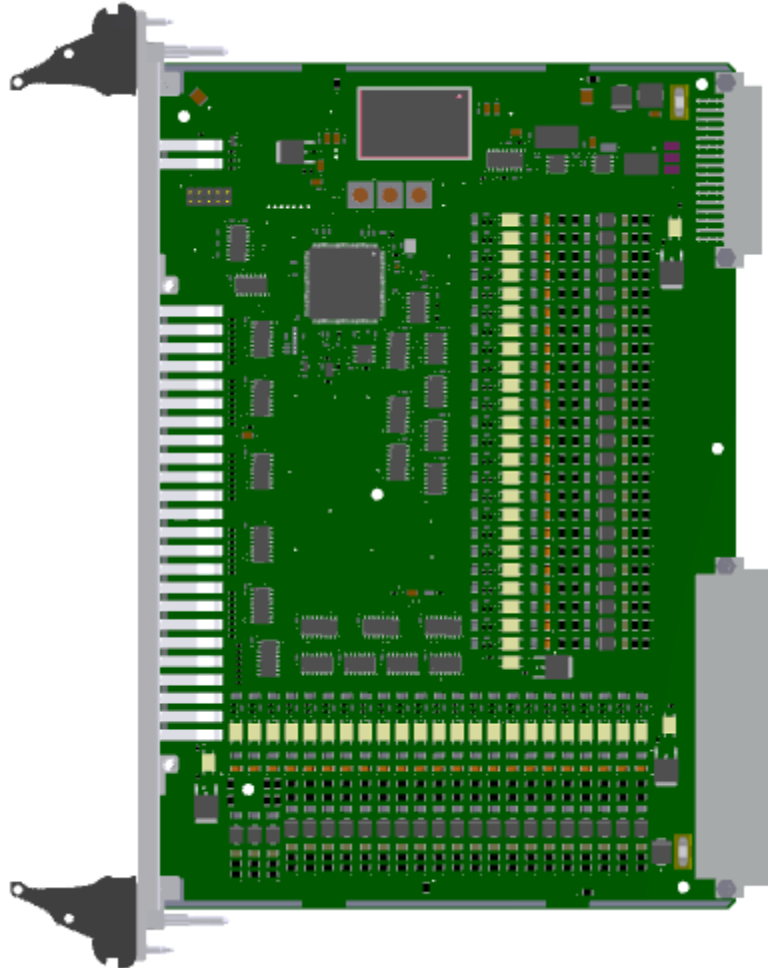




X3-IN

I / O CARD

ID 30620.30621



The X3-IN card is a universal I / O card.



BASIC PARAMETERS:

Operating temperature range: -10°C to +70°C
 -40°C to +85°C (optionally)
Relative Humidity: to 95%

BUS CONNECTOR INTERFACES:

Power supply: 24V DC ±20% / 600mA
CAN: 1 x CAN max 1Mb/s
Inputs: 45 universal binary inputs

OTHER INTERFACES:

CONNECTOR INTERFACES ON THE FRONT PANEL:

LEDs: Logic power supply and life indicator
 Inputs status

GALVANIC ISOLATION:

PE housing / Object 3kV DC
 PE housing / Logic power supply 3kV DC
 Object / Logic power supply 3kV DC

SOFTWARE:

Integrated

POSSIBLE MANUFACTURING OPTIONS:

Conformal coating

DIMENSIONS:

Card dimensions: double Eurocard 6U 233x160 mm
 Front panel width: 8TE (40 mm)

Weight: ca. 130g

