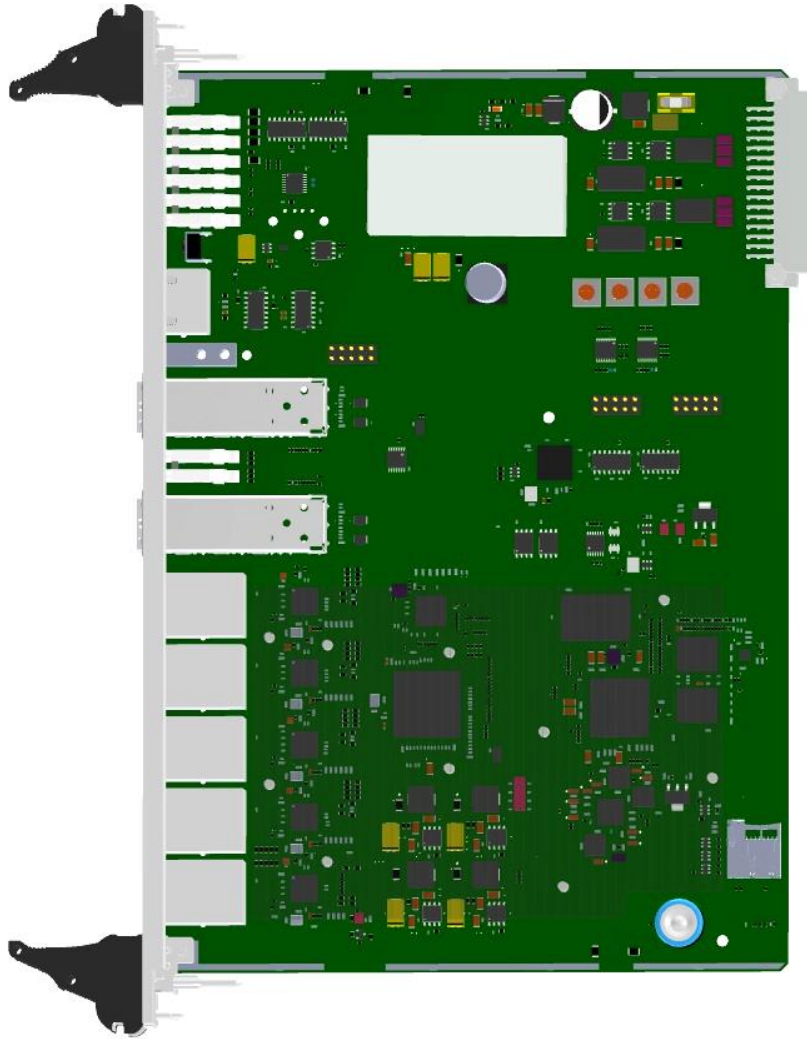




# X3-ETH2-SFP PROCESSOR CARD

ID 30556



The card is designed to manage the X3 card cage with the installed X3 object cards. It enables the control function included in the user's software. The communication inside the card cage between the processor card and the object cards is based on the CAN bus with a maximum speed of 1 Mbit / s. It can communicate with master systems using 10/100 / 1000Mb / s Ethernet ports and 1Gb / s SFP ports. The processor card contains an integrated unmanaged Gigabit Ethernet switch.



**BASIC PARAMETERS:**

**Operating temperature range:** -10°C to +70°C  
-40°C to +85°C (optionally)

**Relative Humidity:** to 95%

**BUS CONNECTOR INTERFACES:**

**Power supply:** 24V DC -10 +20% / 300mA

**CAN:** 2 x CAN max 1Mb/s

**OTHER INTERFACES:**
**CONNECTOR INTERFACES ON THE FRONT PANEL:**

**Ethernet:** 5 x 1Gb/s - 10Base-Te, 100Base-TX, 1000Base-T standards

**Term:** 1 x RS232, RJ45 system terminal, uninsulated

**SFP:** 2 x SFP 1Gb/s, 1000Base-X standard

**CPU:** Sitara® ARM® Cortex ®-A8 32bit @ 600MHz

**Memory:** RAM 1GB DDR3, FLASH 1GB, µSD

**GALVANIC ISOLATION:**

PE housing / Logic power supply 1kV DC

ETH port / Logic power supply 0.5kV DC

**SOFTWARE:**
**POSSIBLE MANUFACTURING OPTIONS:**

Conformal coating

**DIMENSIONS:**

**Card dimensions:** double Eurocard 6U 233x160 mm

**Front panel width:** 4TE (20 mm) or 6TE (30 mm)

**Weight:** ca. 320g

