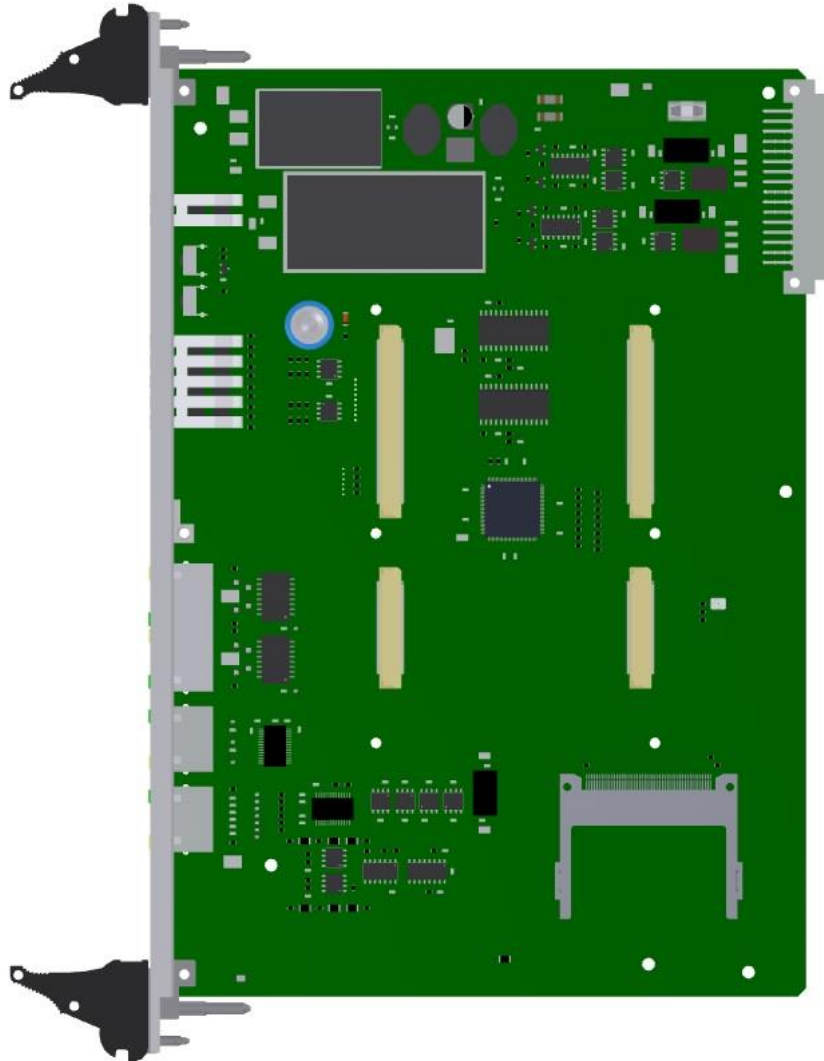




X3-EBC1

PROCESSOR CARD

ID 30751



The X3-EBC1 processor card is designed to manage the X3 system cage and to perform the control function. The exchange of information inside the card cage is accomplished through isolated CAN interfaces at speeds up to 1 Mbit / s. The board communicates with master systems using 10 / 100Mb / s Ethernet ports, an isolated RS422 or RS232 port. Especially useful in harsh industrial environments.



BASIC PARAMETERS:

Operating temperature range: -10°C to +70°C
-40°C to +85°C (optionally)

Relative Humidity: to 95%

BUS CONNECTOR INTERFACES:

Power supply: 24V DC ±20% / 500mA

CAN: 2 x CAN max 1Mb/s

Ethernet: 2 x 10/100 Mb/s

Term: RS232 uninsulated system port

T1: RS232 or RS422 configurable RS port

OTHER INTERFACES:

Switches: 3 x 16-position switch
SW1 + SW2- module address
SW3 – transmission speed

CONNECTOR INTERFACES ON THE FRONT PANEL:

LEDs: Logic power supply and life indicator

GALVANIC ISOLATION:

PE housing / Logic power supply 1kV DC
RS "T1" port / Logic power supply 0.5kV DC
ETH port / Logic power supply 0.5kV DC

SOFTWARE:

Operating system Linux or QNX®

SoftPLC: ISaGRAF

POSSIBLE MANUFACTURING OPTIONS:

Conformal coating

DIMENSIONS:

Card dimensions: double Eurocard 6U 233x160 mm

Front panel width: 6TE (30 mm)

Weight: ca. 160g

