

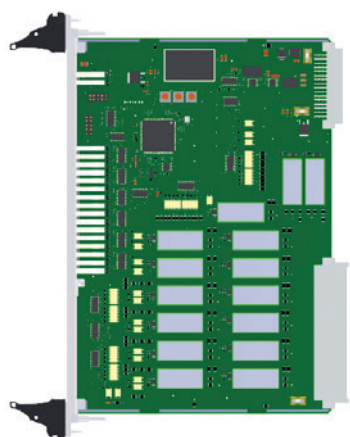
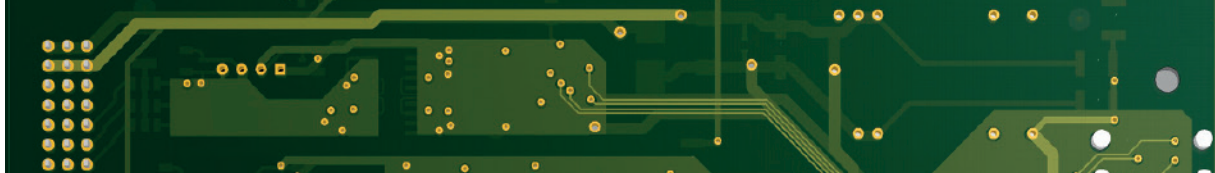


[www.rail-mil.eu](http://www.rail-mil.eu)



# **X3 CARDS**

**CONTROL - RELAY DEVICES**



### X3-OUT

The X3-OUT relay output card is designed to control the railway traffic control circuits as a relay contact. The card supports hot-swap capability. It is made in two versions:

- X3-OUT-Z – 15 x NO contact,
- X3-OUT-R – 15 x NC contact.

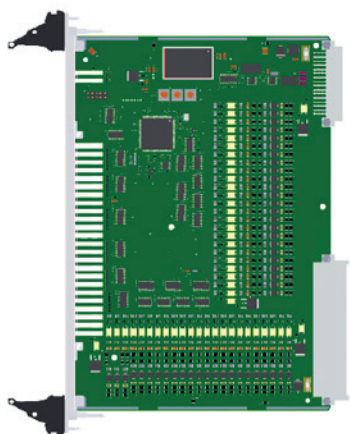
Front panel width 8TE.

#### Basic parameters:

- |                |                            |
|----------------|----------------------------|
| ■ Power supply | 24V DC                     |
| ■ CAN          | 1 x CAN                    |
| ■ Outputs      | 15 (relay) control outputs |
|                | Temperature sensor         |

#### Front panel:

- |        |                                       |
|--------|---------------------------------------|
| ■ LEDs | Logic power supply and life indicator |
|        | Outputs status                        |



### X3-IN

X3-IN is a digital input card. Each of the inputs is optically isolated. The card supports hot-swap capability. It is suitable for railway and industrial applications.

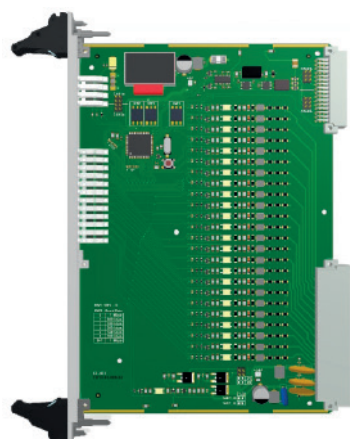
Front panel width 8TE.

#### Basic parameters:

- |                |                             |
|----------------|-----------------------------|
| ■ Power supply | 24V DC                      |
| ■ CAN          | 1 x CAN                     |
| ■ Inputs       | 45 universal digital inputs |
|                | Typically 24V DC / 10mA     |
|                | Temperature sensor          |

#### Front panel:

- |        |                                       |
|--------|---------------------------------------|
| ■ LEDs | Logic power supply and life indicator |
|        | Inputs status                         |



### X3-IO3

The X3-IO3 digital input card is designed to collect device status, signal from relay contacts, optical isolation or other forms of signal distribution. It has 24 digital two-state inputs. Inputs are divided into 2 groups of 12 inputs. The card processes signals from the inputs and makes them available to the processor. Each of the inputs is optically isolated. The external contact test takes place with a signal variable over time. The card supports hot-swap capability. Especially useful in harsh industrial environments.

Front panel width 8TE.

#### Basic parameters:

- |                |                          |
|----------------|--------------------------|
| ■ Power supply | 24V DC $\pm 20\%$ / 80mA |
| ■ CAN          | 1 x CAN max 1Mb/s        |
| ■ Wejścia      | 24 x 24V DC / 15mA       |

#### Front panel:

- |        |                                       |
|--------|---------------------------------------|
| ■ LEDs | Logic power supply and life indicator |
|        | Inputs status                         |





### X3-IO6

The X3-IO6 digital output card is designed to control external devices. It has 24 optically isolated digital two-state outputs. The card processes signals from the processor and controls the corresponding output. Output circuits work with 24V DC, with a maximum continuous load of up to 300mA. Total object current for the whole card can not exceed 6A. The card supports hot-swap capability. Especially useful in harsh industrial environments.

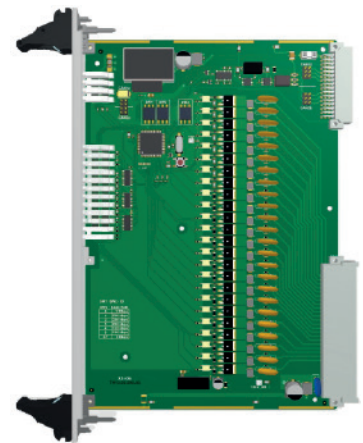
Front panel width 8TE.

#### Basic parameters:

- |                |                           |
|----------------|---------------------------|
| ■ Power supply | 24V DC $\pm 20\%$ / 130mA |
| ■ CAN          | 1 x CAN max 1Mb/s         |
| ■ Outputs      | 24 x 24V DC / 300mA       |

#### Front panel:

- |        |   |
|--------|---|
| ■ LEDs | Logic power supply and life indicator<br>Outputs status |
|--------|---|



### X3-OPTO

X3-OPTO is a current detection card in the signal light circuits. It has 16 independent current detection inputs isolated from each other. The card supports hot-swap capability.

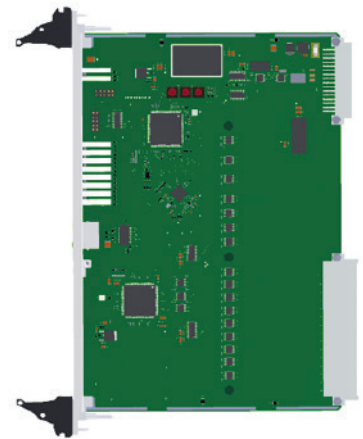
Front panel width 8TE.

#### Basic parameters:

- |          |  |
|----------|--|
| ■ CAN    | 1 x CAN  |
| ■ Inputs | 16 independent current detection inputs<br>Signal light circuits from 115 to 145V AC<br>Temperature sensor |

#### Front panel:

- |            |  |
|------------|--|
| ■ Ethernet | User configurable                                      |
| ■ LEDs     | Logic power supply and life indicator<br>Inputs status |



### X3-SW14-080402

X3-SW14-080402 is a 14-port Ethernet switch. It has 8 ports for SFP modules, 4 RJ45 1Gb/s ETH ports and 2 SGMII ports on the bus. The card supports hot-swap capability.

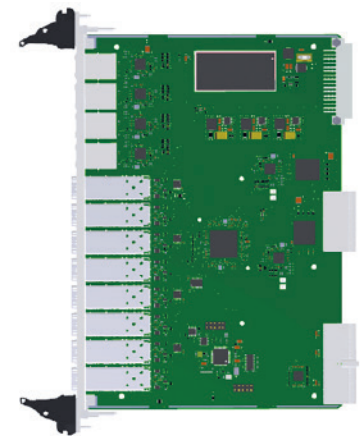
Front panel width 8TE.

#### Basic parameters:

- |                |         |
|----------------|---------|
| ■ Power supply | 24V DC  |
| ■ SGMII        | 2 ports |

#### Front panel:

- |        |                                   |
|--------|-----------------------------------|
| ■ RJ45 | 4 ports ETH, 1Gb/s                |
| ■ SFP  | 8 ports, 1Gb/s                    |
| ■ LEDs | SFP transmission state indication |





**RM**

[www.rail-mil.eu](http://www.rail-mil.eu)

**Rail Mil Computers Sp. z o.o. Sp. komandytowa**

03-982 Warszawa, ul. Kosmatki 82

tel.: +48 222 099 450

fax: +48 222 099 455

[www.rail-mil.eu](http://www.rail-mil.eu)

[biuro@rail-mil.eu](mailto:biuro@rail-mil.eu)



**WE ARE A PARTNER FOR THE FOLLOWING COMPANIES:**



All trademarks and company names are used for informational purposes only and are the sole property of their respective companies.



The catalogue for information purposes only and does not constitute an offer within the meaning of the Civil Code. All specifications are subject to change without notice.