



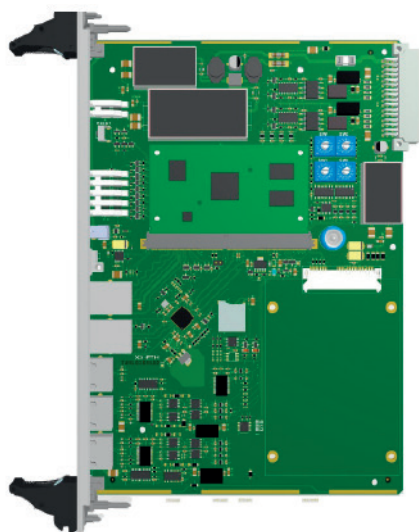
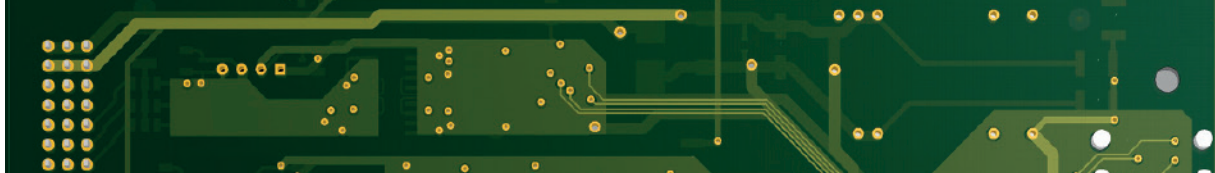
RM

www.rail-mil.eu



X3 CARDS

AUTOMATION AND CONTROL - CPUs



X3-ETH

The X3-ETH processor card is used to manage the X3 family card cage of IO boards for executing control and feedback control functions of safety systems, e.g. railway traffic control. The exchange of information inside the card cage is accomplished through isolated CAN interfaces at speeds up to 1 Mbit / s. The board communicates with the master system using the Ethernet interface.

Front panel width 6TE.

Basic parameters:

- Power supply 24V DC $\pm 20\%$ / 500mA
- CAN 2 x CAN max 1Mb/s

Front panel function:

- LEDs Logic power supply and life indicator
- Ethernet 2 x 1Gb/s
- RS232 2 x configurable RS port
- USB

Other interfaces:

- Switches: 4 x 16-position switch
- SW1 + SW2 – module address
- SW3 – transmission speed
- SW4 – general purpose

X3-ETH2

The two-channel X3-ETH2 processor card is used as CAN server in the X3 family card cage.

Front panel width 4TE.

Basic parameters:

- Power supply 24V DC $\pm 20\%$ / 600mA
- CAN 1 x CAN max 1Mb/s

Front panel function:

- LEDs Logic power supply and life indicator
- Ethernet 4 x 10/100Mb/s
- SFP 2 ports, 100Mb/s

Other interfaces:

- Switches: 4 x 16-position switch
- SW1 + SW2 – module address
- SW3 – transmission speed
- SW4 – general purpose



X3-ETH2-SFP

The X3-ETH2-SFP processor card is used to manage the X3 family card cage of IO boards for executing control and feedback control function of the systems.

Front panel width 4TE.

Basic parameters:

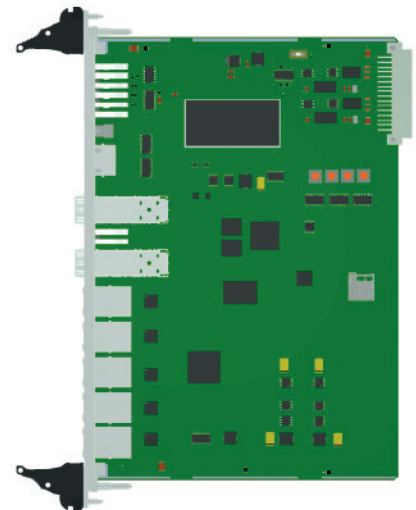
- Power supply 24V DC $\pm 20\%$ / 600mA
- CAN 2 x CAN max 1Mb/s

Front panel function:

- LEDs Logic power supply and life indicator
- Ethernet 4 x 1Gb/s
- Ethernet 1 x 100Mb/s
- RS232 1 x port RS
- USB 1 x USB 2.0
- SFP 2 ports, 1Gb/s

Other interfaces:

- Switches: 4 x 16-position switch
- SW1 + SW2 – module address
- SW3 – transmission speed
- SW4 – general purpose



X3-PC-6U

The X3-PC-6U computer card has PC functionalities and is installed in the X3 family card cages. Card performance is dependent on the CPU module installed. The card may have two independent SATA interfaces. The computer can run under Windows®, Linux, QNX® operating systems. The X3-PC-6U card supports hot-swap capability.

Front panel width 6TE.

Basic parameters:

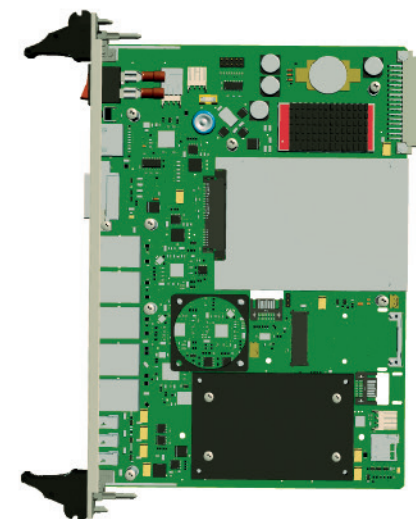
- Power supply 24V DC $\pm 20\%$ / 350mA
- CPU
 - mini COMe type 10
 - to 4 GB RAM DDR3
 - 1 x 2,5" SSD/HDD
 - 1 x mSATA

Front panel function:

- Ethernet 2 x 1Gb/s
- Ethernet 3 x 100Mb/s
- USB 3 x USB 2.0
- Video output 1 x DVI
- Serial 1 x RS232

CPUs used:

- Intel® Celeron® N2930 QuadCore 4 x 1,86GHz, 2GB RAM DDR3
- Intel® Atom® E3845 QuadCore 4 x 1,91GHz, 4GB RAM DDR3, 8GB Flash
- Intel® Atom® E3826 DualCore 2 x 1,46GHz, 2GB RAM DDR3, 4GB Flash
- Intel® Atom® D2550 DualCore 2 x 1,86GHz, 2GB RAM DDR3
- Intel® Atom® E3825 DualCore 2 x 1,33GHz, 2GB RAM DDR3





RM

www.rail-mil.eu

Rail Mil Computers Sp. z o.o. Sp. komandytowa

03-982 Warszawa, ul. Kosmatki 82

tel.: +48 222 099 450

fax: +48 222 099 455

www.rail-mil.eu

biuro@rail-mil.eu



WE ARE A PARTNER FOR THE FOLLOWING COMPANIES:



All trademarks and company names are used for informational purposes only and are the sole property of their respective companies.



The catalogue for information purposes only and does not constitute an offer within the meaning of the Civil Code. All specifications are subject to change without notice.