



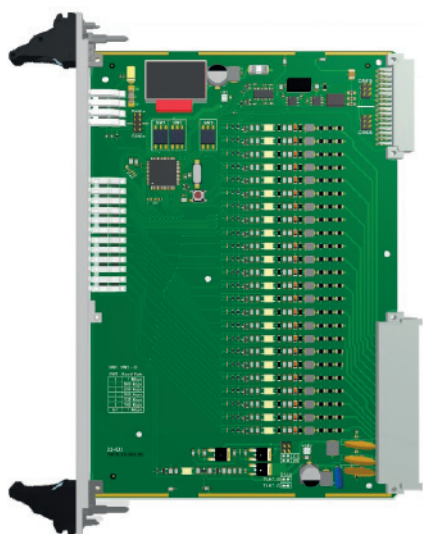
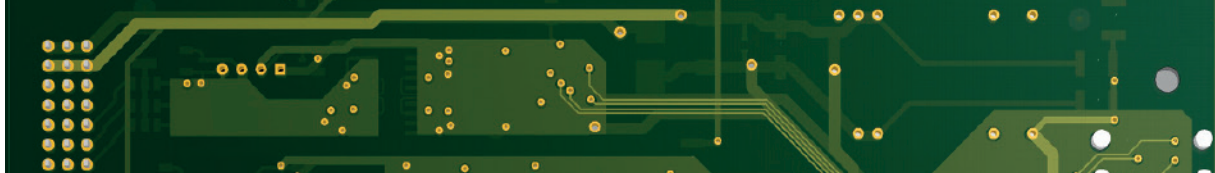
**RM**

[www.rail-mil.eu](http://www.rail-mil.eu)



# **X3 CARDS**

**GENERAL-PURPOSE AUTOMATION**



### X3-IO3

The X3-IO3 digital input card is designed to collect device status, signal from relay contacts, optical isolation or other forms of signal distribution. It has 24 digital two-state inputs. Inputs are divided into 2 groups of 12 inputs. The card processes signals from the inputs and makes them available to the processor. Each of the inputs is optically isolated. The external contact test takes place with a signal variable over time. The card supports hot-swap capability. Especially useful in harsh industrial environments.

Front panel width 6TE.

#### Basic parameters:

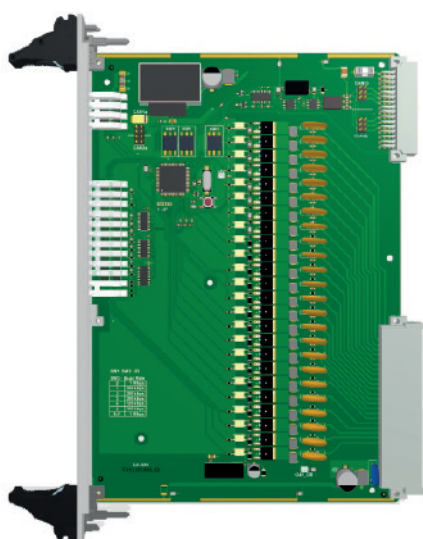
- Power supply 24V DC  $\pm 20\%$  / 80mA
- CAN 1 x CAN max 1Mb/s
- Inputs 24 x 24V DC / 15mA

#### Front panel function:

- LEDs Logic power supply and life indicator  
Inputs status

#### Inne interfejsy:

- Switches: 3 x 16-position switch  
SW1 + SW2 – module address  
SW3 – transmission speed



### X3-IO6

The X3-IO6 digital output card is designed to control external devices. It has 24 optically isolated digital two-state outputs. The card processes signals from the processor and controls the corresponding output. Output circuits work with 24V DC, with a maximum continuous load of up to 300mA. Total object current for the whole card can not exceed 6A. The card supports hot-swap capability. Especially useful in harsh industrial environments.

Front panel width 6TE.

#### Basic parameters:

- Power supply 24V DC  $\pm 20\%$  / 130mA
- CAN 1 x CAN max 1Mb/s
- Outputs 24 x 24V DC / 300mA

#### Front panel function:

- LEDs Logic power supply and life indicator  
Outputs status

#### Other interfaces:

- Switches: 3 x 16-position switch  
SW1 + SW2 – module address  
SW3 – transmission speed



### X3-IO4

The X3-IO4 digital I / O card is designed to control and measure signals from analog external devices. The card supports hot-swap capability. Especially useful in harsh industrial environments.

Front panel width 6TE.

#### Basic parameters:

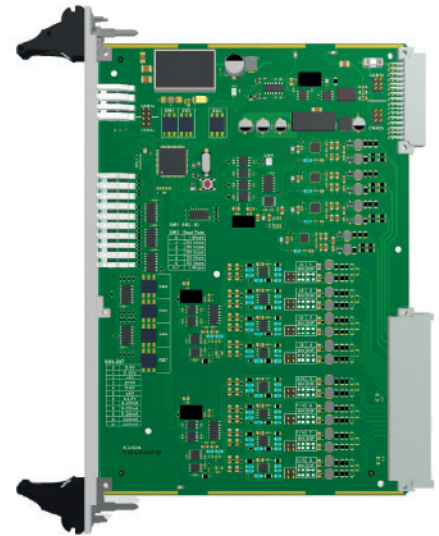
- Power supply 24V DC / 150mA (16/0 version)  
24V DC / 300mA (16/4 version)
- CAN 1 x CAN max 1Mb/s
- Outputs: 4 (each can work independently in the mode:  
0-5V, 0-10V, +/-5V, +/-10V, 0-6V, +/-6V,  
+/-2.5V, 4-20mA, 0-20mA, 0-24mA, +/-20mA,  
+/-24mA)
- Inputs: 16 / 8 (single 0-10V / differential +/-10V)

#### Front panel function:

- LEDs Logic power supply and life indicator  
I / O status

#### Other interfaces:

- Switches: 7 x 16-position switch  
SW1 + SW2 – module address  
SW3 – transmission speed  
SW4 – SW7 – output mode



### X3-SW14-080402

X3-SW14-080402 is a 14-port Ethernet switch. It has 8 ports for SFP modules, 4 RJ45 1Gb/s ETH ports and 2 SGMII ports on the bus. The card supports hot-swap capability.

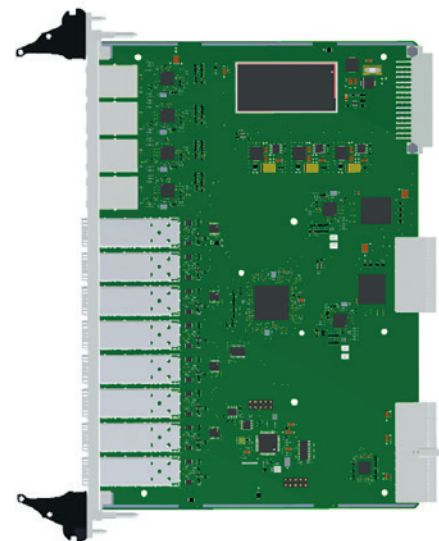
Front panel width 6TE.

#### Basic parameters:

- Power supply 24V DC
- SGMII 2 ports

#### Front panel function:

- RJ45 4 ports ETH, 1Gb/s
- SFP 8 ports, 1Gb/s
- LEDs SFP transmission state indication





**RM**

[www.rail-mil.eu](http://www.rail-mil.eu)

**Rail Mil Computers Sp. z o.o. Sp. komandytowa**

03-982 Warszawa, ul. Kosmatki 82

tel.: +48 222 099 450

fax: +48 222 099 455

[www.rail-mil.eu](http://www.rail-mil.eu)

[biuro@rail-mil.eu](mailto:biuro@rail-mil.eu)



**WE ARE A PARTNER FOR THE FOLLOWING COMPANIES:**



All trademarks and company names are used for informational purposes only and are the sole property of their respective companies.

The catalogue for information purposes only and does not constitute an offer within the meaning of the Civil Code. All specifications are subject to change without notice.

