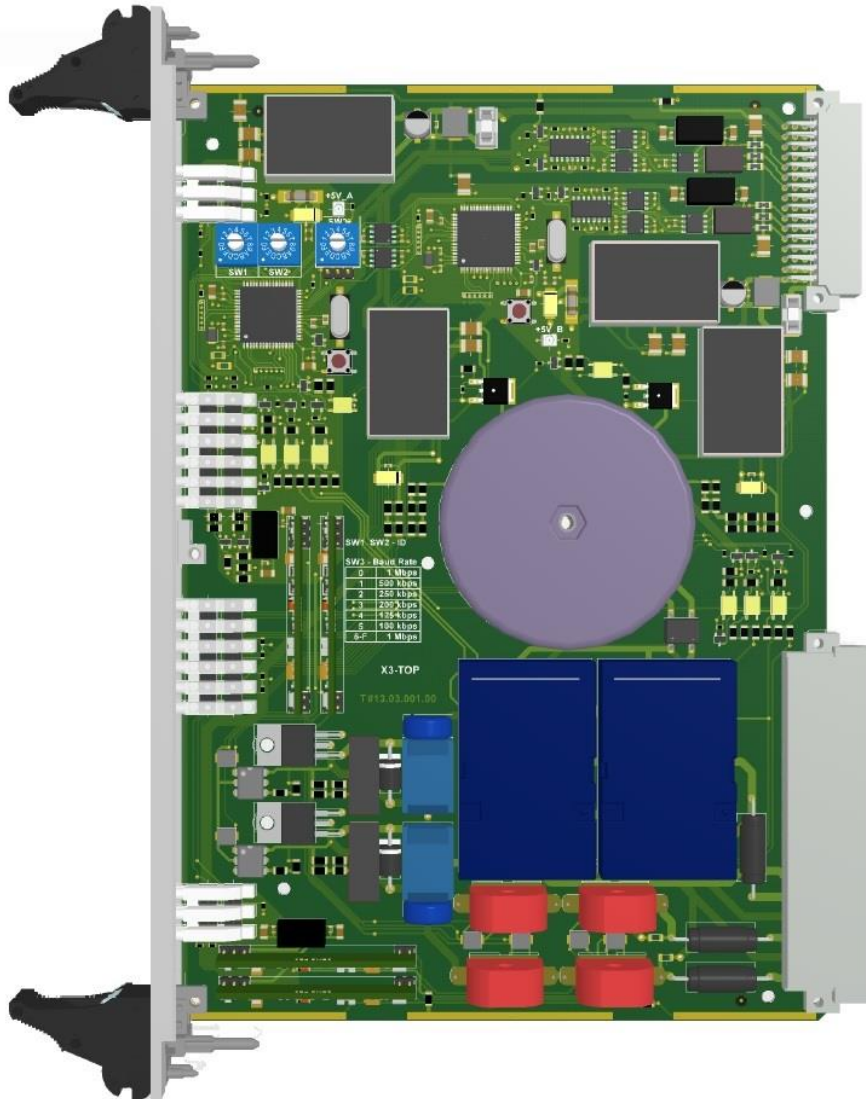




X3-TOP

WARNING SHIELD CARD

ID 30203



The X3-TOP card is designed to control the warning shield. Each TOP warning shield is individually controlled by the X3-TOP card. The card processes signals from and to the processor via two channels. It has two independent hardware processing channels: Channel A and Channel B.



BASIC PARAMETERS:

Operating temperature range: -10°C to +70°C
-40°C to +85°C (optionally)

Relative Humidity: to 95%

BUS CONNECTOR INTERFACES:

Power supply: 24V DC $\pm 20\%$ / 150mA

CAN: 2 x CAN max 1Mb/s

Outputs: 2 outputs max 0.99A / 145V AC
current measurement in object circuit

OTHER INTERFACES:

Switches: 3 x 16-position switch
SW1 + SW2 – module address
SW3 – transmission speed

CONNECTOR INTERFACES ON THE FRONT PANEL:

LEDs: Logic power supply and life indicator
Outputs status

GALVANIC ISOLATION:

PE housing / Object 3kV DC
PE housing / Logic power supply 3kV DC
Object / Logic power supply 3kV DC

SOFTWARE:

Integrated

POSSIBLE MANUFACTURING OPTIONS:

Conformal coating

DIMENSIONS:

Card dimensions: double Eurocard 6U 233x160 mm

Front panel width: 6TE (30 mm)

Weight: ca. 300g

