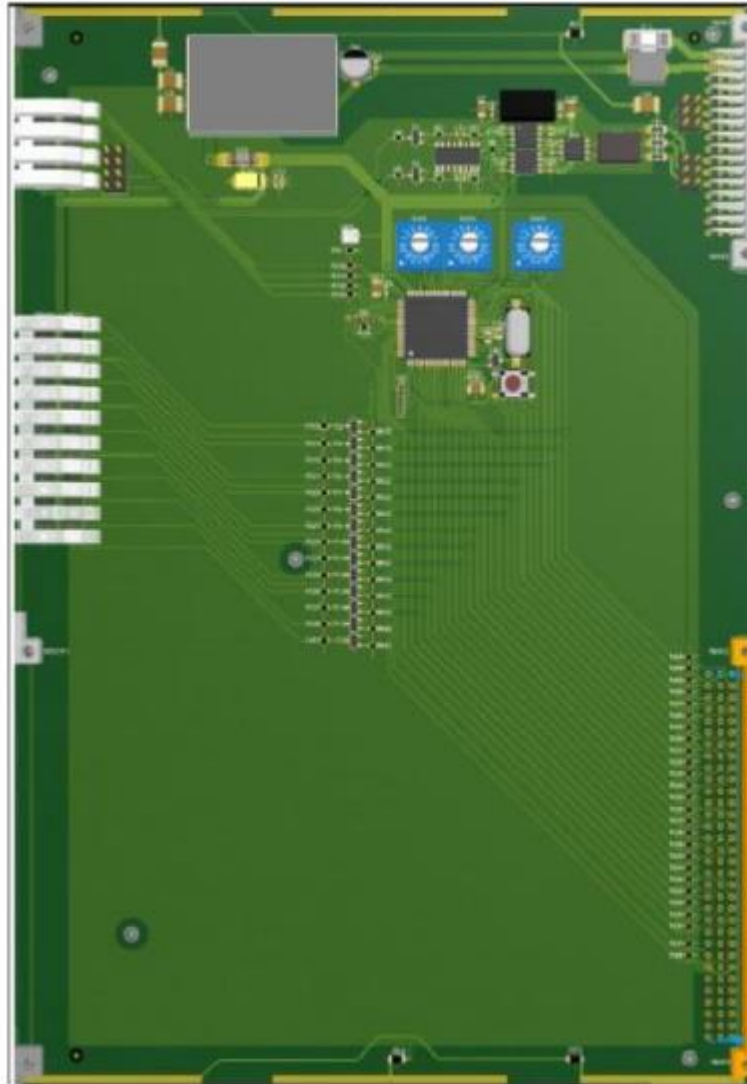




X3-LICZ

AXLE SENSOR MODULE

ID 30102



The X3-LICZ card is designed to work with Frauscher evaluation boards. The card can work with four evaluation boards. Via the X3-BP-LICZ bus, they provide the SysA, SysB, ERR signals developed by the evaluation board for the X3-EBC1 processor.



BASIC PARAMETERS:

Operating temperature range: -10°C to +70°C
 -40°C to +85°C (optionally)

Relative Humidity: to 95%

BUS CONNECTOR INTERFACES:

Power supply: 24V DC ±20% / 90mA

CAN: 2 x CAN max 1Mb/s

Inputs: 24 inputs max 10mA / 5V DC
 current measurement in object circuit

OTHER INTERFACES:

Switches: 3 x 16-position switch
 SW1 + SW2 – module address
 SW3 – transmission speed

CONNECTOR INTERFACES ON THE FRONT PANEL:

LEDs: Logic power supply and life indicator
 Inputs status

GALVANIC ISOLATION:

PE housing / Logic power supply 1kV DC

SOFTWARE:

Integrated

POSSIBLE MANUFACTURING OPTIONS:

Conformal coating

DIMENSIONS:

Card dimensions: double Eurocard 6U 233x160 mm

Front panel width: 4TE (20 mm)

Weight: ca. 100g

