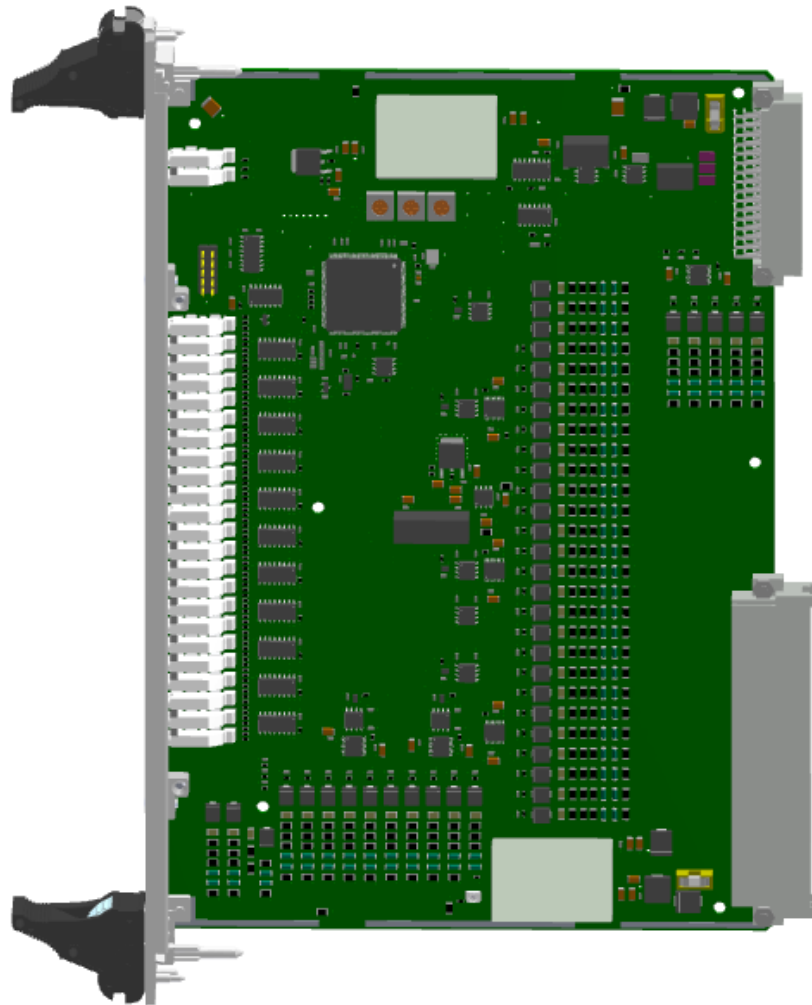




X3-IO7

UNIVERSAL INPUT CARD

ID 30610



The X3-IO7 card is intended for monitoring multi-state / parametric lines with the detection of the cable line condition. With the use of a dedicated X5-EOL end-of-line module, it is possible to monitor the status of various actuators. The card has 44 analog measurement inputs, which are implemented as individual current converters.



BASIC PARAMETERS:

Operating temperature range: -10°C to +70°C
-40°C to +85°C (optionally)

Relative Humidity: to 95%

BUS CONNECTOR INTERFACES:

Power supply: 24V DC -10% +20% / 190mA

CAN: 1 x CAN max 1Mb/s

Inputs: 44 analog inputs, common GND type
Input voltage - 0-5V
Maximum input current - 25mA
Distinguishable line states - 6
Processing resolution - 12 bit

OTHER INTERFACES:

Switches: 3 x 16-position switch
SW1 + SW2- module address
SW3 - transmission speed

CONNECTOR INTERFACES ON THE FRONT PANEL:

LEDs: Logic power supply and life indicator
Inputs status

GALVANIC ISOLATION:

PE housing / Logic power supply at 3kV DC
PE housing / Object at 3kV DC
Object / Logic supply at 3kV DC

SOFTWARE:

Integrated

POSSIBLE MANUFACTURING OPTIONS:

Conformal coating

DIMENSIONS:

Card dimensions: double Eurocard 6U 233x160 mm
Front panel width: 6TE (30 mm)
Weight: ca. 140g

