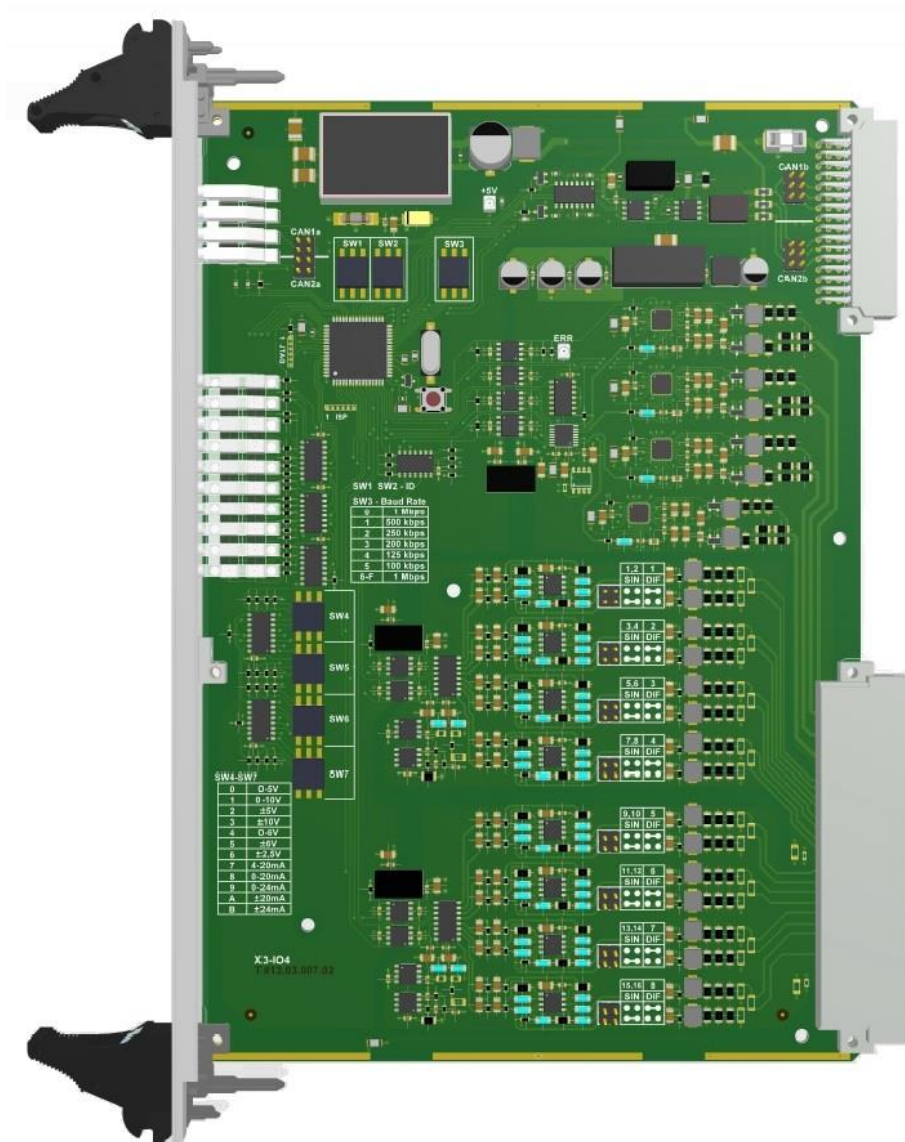




X3-IO4

UNIVERSAL I/O CARD

ID 30113



The card is designed to control and measure signals from analog external devices. The card supports hot-swap capability. Replacement of a damaged module can take place with the power supply of the card cage. Especially useful in harsh industrial environments.



BASIC PARAMETERS:

Operating temperature range: -10°C to +70°C
-40°C to +85°C (optionally)

Relative Humidity: to 95%

BUS CONNECTOR INTERFACES:

Power supply: 24V DC / 150mA (16/0 version)
24V DC / 300mA (16/4 version)

CAN: 1 x CAN max 1Mb/s
4 (each can work independently in the mode: 0-5V, 0-10V, +/-5V, +/-10V, 0-6V, +/-6V, +/-2.5V, 4-20mA, 0-20mA, 0-24mA, +/-20mA, +/-24mA)

Outputs:

Inputs: 16 / 8 (single 0-10V / differential +/-10V)

OTHER INTERFACES:

Switches: 7 x 16-position switch
SW1 + SW2- module address
SW3 - transmission speed
SW4 - SW7 - output mode

CONNECTOR INTERFACES ON THE FRONT PANEL:

LEDs: Logic power supply and life indicator
I / O status

GALVANIC ISOLATION:

system / power supply at 3kV DC
system / analog inputs and outputs at the 3kV DC

SOFTWARE:

Integrated

POSSIBLE MANUFACTURING OPTIONS:

Conformal coating

DIMENSIONS:

Card dimensions: double Eurocard 6U 233x160 mm
Front panel width: 6TE (30 mm)
Weight: ca. 350g

