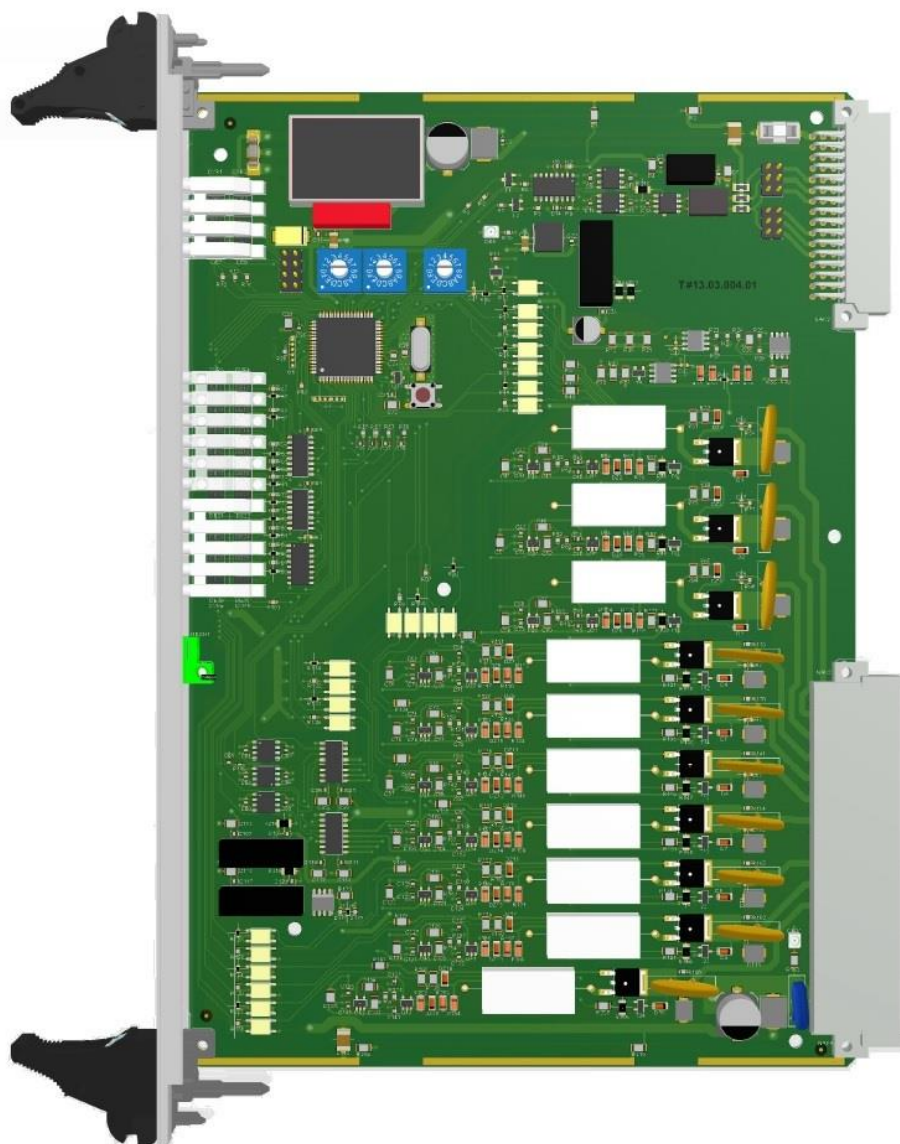


X3-IO2

UNIVERSAL OUTPUT CARD

ID 30201



The card is designed for device control and continuity of external system circuits monitoring. Current measurement is performed separately on each output via the diagnostic system. The card allows you to test the continuity of the circuit on each output. The card supports hot-swap capability. Replacement of a damaged module can take place with the power supply of the card cage. Especially useful in harsh industrial environments.

**BASIC PARAMETERS:**

| | |
|-------------------------------------|---|
| Operating temperature range: | -10°C to +70°C -40°C to +85°C (optionally) |
| Relative Humidity: | to 95% |

BUS CONNECTOR INTERFACES:

| | |
|----------------------|---------------------------|
| Power supply: | 24V DC $\pm 20\%$ / 190mA |
| CAN: | 1 x CAN max 1Mb/s |
| Outputs: | 10 outputs 24VDC / 1.2 A |

OTHER INTERFACES: interfaces

| | |
|------------------|--|
| Switches: | 3 x 16-position switch SW1 + SW2 – module address SW3 – transmission speed |
|------------------|--|

CONNECTOR INTERFACES ON THE FRONT PANEL:

| | |
|--------------|---|
| LEDs: | Logic power supply and life indicator Outputs status |
|--------------|---|

GALVANIC ISOLATION:

PE housing / Object 3kV DC
PE housing / Logic power supply 3kV DC
Object / Logic power supply 3kV DC

SOFTWARE:

Integrated

POSSIBLE MANUFACTURING OPTIONS:

Conformal coating

DIMENSIONS:

| | |
|--------------------|-------------------------------|
| Card dimensions: | double Eurocard 6U 233x160 mm |
| Front panel width: | 6TE (30 mm) |
| Weight: | ca. 340g |

