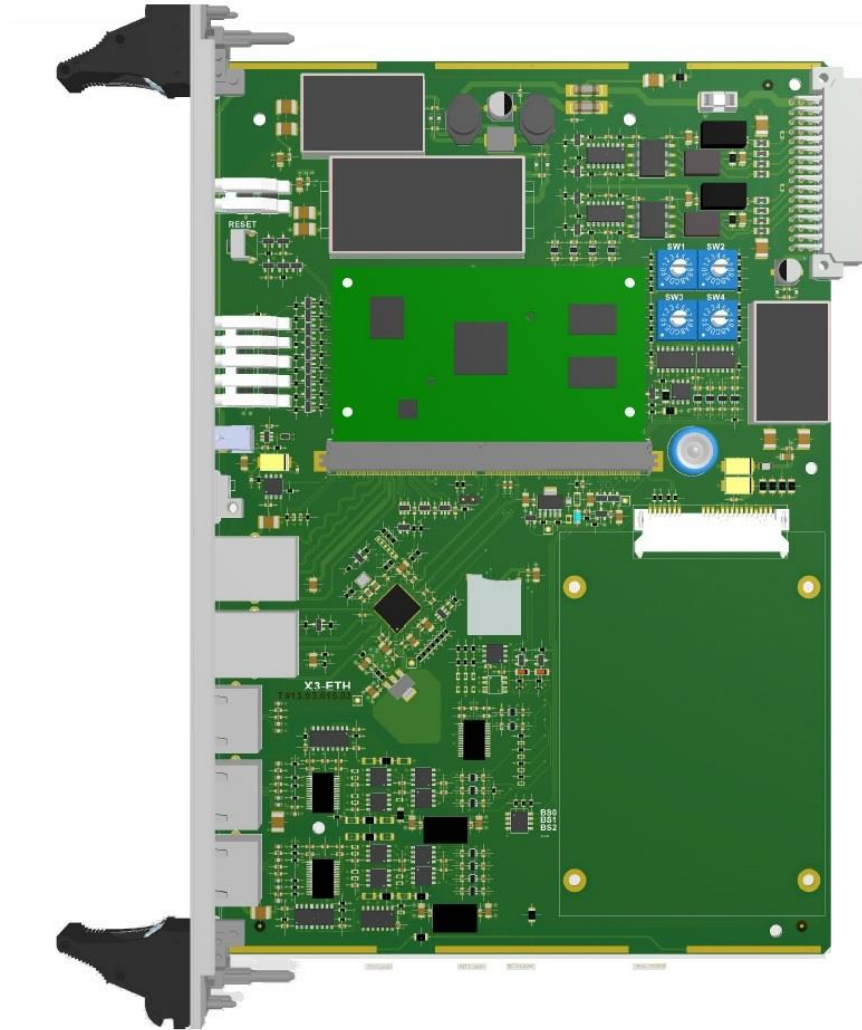




X3-ETH

CONTROLLER CARD

ID 30824



The X3-ETH card is a transmission concentrator card used to manage the X3 family card cage of IO boards for executing control and feedback control functions of safety systems, e.g. railway traffic control. The exchange of information inside the card cage is accomplished through isolated CAN interfaces at speeds up to 1 Mbit / s. The board does not perform any control functions but only communicates with the master system via the ETH interface.



BASIC PARAMETERS:

Operating temperature range:	0°C to +70°C -40°C to +85°C (optionally)
Relative Humidity:	to 95%

BUS CONNECTOR INTERFACES:

Power supply:	24V DC ±20% / 500mA
CAN:	2 x CAN max 1Mb/s
Ethernet:	2 x 1 Gb/s
Term:	RS232 uninsulated system port
T1, T2:	T1, T2 configurable RS port

OTHER INTERFACES:

Switches:	3 x 16-position switch SW1 + SW2- module address SW3 – transmission speed SW4 – reserve
------------------	--

CONNECTOR INTERFACES ON THE FRONT PANEL:

LEDs:	Logic power supply and life indicator
--------------	---------------------------------------

GALVANIC ISOLATION:

PE housing / Logic power supply 1kV DC
 RS "T1" port / Logic power supply 0.5kV DC
 ETH port / Logic power supply 0.5kV DC

SOFTWARE:

Operating system:	Linux or QNX®
SoftPLC:	SoftPLC: ISaGRAF

POSSIBLE MANUFACTURING OPTIONS:

Conformal coating

DIMENSIONS:

Card dimensions:	double Eurocard 6U 233x160 mm
Front panel width:	6TE (30 mm)
Weight:	ca. 380g

