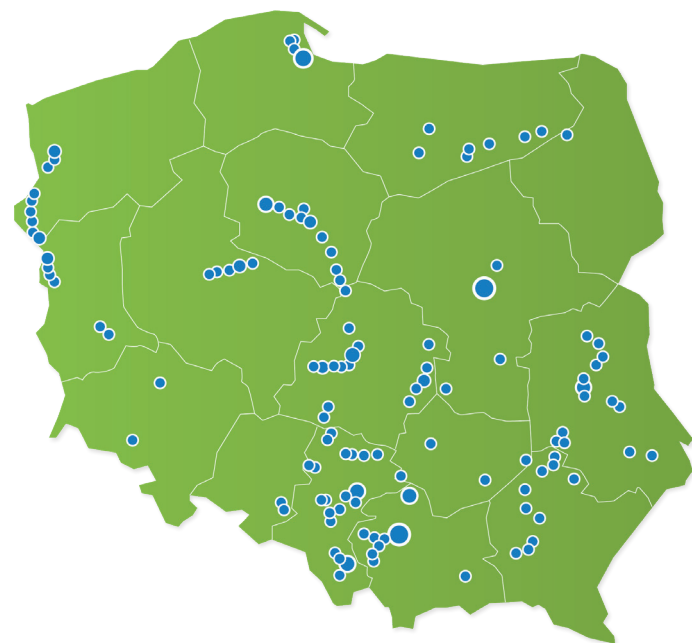


Rail-Mil Computers Sp. z o. o. Sp. k

03-982 Warsaw, Kosmatki 82
T: +48 222 099 450
F: +48 222 099 455
www.rail-mil.eu
biuro@rail-mil.eu



/ Installed systems utilizing components produced by Rail-Mil Computers:



/ Selected case studies of Rail-Mil Systems:

To learn more about the specific Rail-Mil System case studies, please refer to our respective brochure material, as outlined below.



CBL2010
Digital Line Block System



rmSDO
System for Object Detection in the Danger Zone



KSP-7M
Level Crossing Protection System



rm110
Integrated Control System for the Rail Devices and Fire Protection System



rmDSIP
Dynamic Passenger Information System



***rm110-CS**
Power Supply and Control Unit for the use of Fire Protection Devices

COMPANY PROFILE



INNOVATIVE AND RELIABLE, WORLD-CLASS SOLUTIONS CUSTOMIZED TO CLIENT'S NEEDS

RM-STD.191113

ELECTRONICS / AUTOMATION / SYSTEMS / RAILWAY /

All trademarks and company names are used for informational purposes only and are the sole property of their respective companies. The catalogue is for information purposes only and does not constitute an offer within the meaning of the Civil Code. All specifications are subject to change without notice.





” Innovative and reliable, world-class solutions customized to client’s needs. ”

/ Who we are?

Rail-Mil Computers Sp. z o. o. Sp. k. is a Polish company operating mainly in the field of electronics and industrial automation. We focus on offering complete, innovative and world-class solutions for railway and military sectors based on hardware of our own production or purchased from reputable foreign partners. We acquired ISO and AQAP certificates.

/ R&D Activities

Rail-Mil Computers Sp. z o. o. Sp. k. works with leading universities of technology and research units in Poland. We work together on R&D projects as well as develop and implement new products for the railway and military market. This cooperation, in addition to huge satisfaction brought by the contribution to the development of science, gives us access to the best qualified specialists and allows us to build a market advantage.



AQAP 2110:2009



PN-EN ISO 9001:2008



ERTMS Solutions specializes in developing innovative products in the field of railway signaling solutions, compliant with the European ERTMS / ETCS signaling system. The company offers devices for testing, maintenance and diagnostics of balises, track circuits, as well as trackside and trainborne devices.



ADLINK Technologies Inc. is a manufacturer of high-quality PXI, CPCI, CPCI serial, VME, ATCA industrial computers, single board computers and a wide range of dedicated data acquisition modules.



Apacer Technologies Inc. is a manufacturer of 2.5", 1.8" and Half Slim solid-state drives (MLC/SLC technology); Cfast, CompactFlash, SD, microSD memory cards; USB and PCIe modules in standard and extended temperature range.



Red Hat Inc. is a world open source leader in distribution of GNU / Linux, an operating system available for all major hardware platforms. Red Hat delivers a comprehensive portfolio of products and services using the same open, collaborative business model and an affordable, predictable subscription.



Expandium is an innovative and leading provider of network monitoring solutions that uses the latest data transmission technologies. Expandium solutions are dedicated to GSM-R and ETCS and meet all applicable standards.

For more information please visit our website at:
www.rail-mil.eu



/ Key operational areas of Rail-Mil Computers:



RAILWAY

Custom-made components and complete solutions for the railway market: systems for railway traffic control, level crossing protection, object detection and passenger information. Systems integration into Dispatcher Control Centers (DCC).



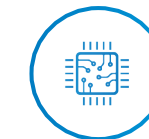
MILITARY

Dedicated solutions for the military market with necessary certification and approvals. High-performance computing units, rugged computers, specialized computers, simulators.



INDUSTRY AND R&D

Dedicated solutions - measurement systems, test stands, monitoring systems, simulators, servers, control systems.



ELECTRONICS

Design and production of custom-made electronic systems. PowerPC, X86, ARM processors, IO cards, buses, switches, specialized modules.



SOFTWARE ENGINEERING

Analysis, definition of requirements, design and implementation. Integration of various systems and devices.



SALES

Sales of branded hardware; hardware and software consulting.



TECHNICAL SUPPORT

Technical support and post-warranty service for the devices that we produce and distribute.

